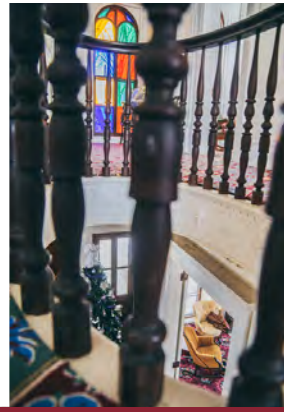


JANESVILLE

Wisconsin's Great Outside





Visit the **Lincoln-Tallman Museum** on the Beautiful Rock County Historical Society Campus

— Take One of the Many Tours —
Plan to Attend our Annual Events



JUNE **VINTAGE CAR SHOW**

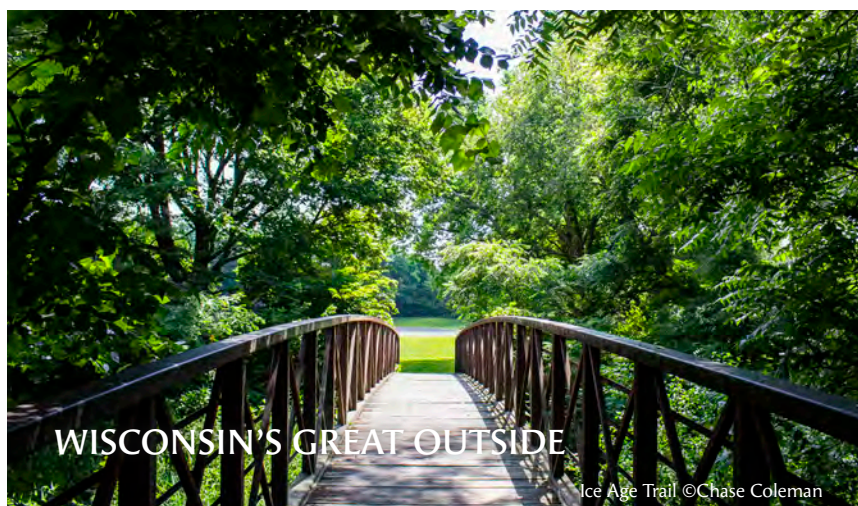


HOLIDAY TREE SHOW NOVEMBER - DECEMBER

AUGUST **TALLMAN ARTS FESTIVAL**

440 N. JACKSON STREET, JANESVILLE | www.rchs.us | 608-756-4509

TABLE OF CONTENTS



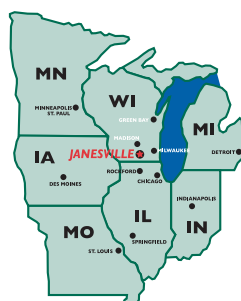
©2023 Janesville Area Convention & Visitors Bureau. No part of this publication may be reprinted or otherwise reproduced without express written permission of the Janesville Area Convention & Visitors Bureau. Every effort is made to make this guide as accurate as possible. As information is subject to change without notice, we encourage readers to verify times, dates and other information listed in this publication.

Cover Image ©Kim Hoholek Photography

Inside the Guide

- 3. WISCONSIN'S GREAT OUTSIDE**
Parks, playgrounds, golf, fishing, trails
- 5. THINGS TO SEE & DO**
Area attractions & activities
- 9. ART FOR ALL**
Public Art Trail, exhibits, barn quilts, mural artists spotlight
- 11. 12 THINGS FOR KIDS**
Fun things for kids to do in Janesville
- 13. PLACES TO STAY**
Hotels, bed & breakfasts, campgrounds
- 15. LOCATIONS & MAP**
Area map, airports, transportation
- 19. DOWNTOWN JANESVILLE**
Shopping and dining

MILES



Lake Geneva, WI	30
Madison, WI	40
Milwaukee, WI	70
Wisconsin Dells, WI	90
Green Bay, WI	150
Door County, WI	200
Rockford, IL	40
Chicago, IL	100

QUESTIONS? Let our expert staff at the Janesville Area Convention & Visitors Bureau assist you. We're here to answer your questions and help you plan your next visit, tour, reunion or special event.

Call (800) 487-2757 or visit our website at janesvillecvb.com.

JANESVILLE AREA
Convention & Visitors Bureau
20 S Main St, Ste 11, Janesville, WI 53455



©Full Spectrum Photography

Wisconsin's Great Outside

Outdoor Fun Great Outside Video

No matter where you are in Janesville you're never more than minutes from scenic outdoor beauty and outstanding hiking, biking, rollerblading, cross-country skiing, water-skiing, disc golf, softball, soccer, sledding, tennis, pickleball, birding, boating and running opportunities. That's because the Janesville community is home to 64 improved parks.



Parks & Playgrounds

The parks we've listed below offer pavilions, picnic tables, bathrooms (open seasonally), and playground equipment. While all of our parks feature some play equipment, we've listed a few of our accessible playgrounds for you to explore. For more information regarding our parks system and recreational programs offered, please call Janesville's Parks and Recreation Division at (608) 755-3030.

	Acres	Paved Trails	Hiking	Mountain Biking	Fishing, Boating	Disc Golf	Accessible Playground	Pool/ Swimming
Rockport Park	246	•	•	•			Peace Park	Olympic Size & Wading
	Cross Country Skiing, Historic Farmstead, Soccer, Interactive GPS trail map							
Palmer Park	164	•		•			CAMDEN	Wading
	Tennis, Sand Volleyball, Sledding, Pet exercise area							
Riverside Park	87	•	•		•	•	Splash Pad	Splash Pad
	Pickleball, Shuffleboard, Baseball, Devil's Staircase trail access							
Traxler Park	27				•			
	Veterans Memorial Plaza, Rock Aqua Jays Water Ski Shows, Sand Volleyball							
Sheiffer Park	87	•	•					
	Sledding, Snowshoeing							
Robert O Cook Arboretum/JSOL	160	•	•					
	Snowshoeing, Log Cabin, StoryWalk® Interactive GPS trail map							
Lustig Park	32		•			•		
Lions Beach					•			Pond

Fishing

Janesville offers several opportunities for leisurely fishing. To learn more visit janesvillecvb.com/ resources to download our fishing brochure or call the Wisconsin Department of Natural Resources at (608) 743-4800.



Peace Park ©Full Spectrum Photography

Golf

You'll find 25 area golf courses within 45 minutes of Janesville. Here are those within Janesville.

	Address	Phone	Website	Holes	Par
Bass Creek	1303 S Murphy Rd	(608) 876-6631	golfbasscreek.com	9	36
Blackhawk	2100 Palmer Dr	(608) 757-3090	janesvilleblackhawk.com	9	34
Cecelia's	1901 S Emerald Grove Rd	(608) 754-8550	ceceliasgolf.com	9	36
Glen Erin	1417 W Airport Rd	(608) 741-1100	gleneringolf.com	18	71
Riverside	2100 Golf Course Rd	(608) 757-3080	janesvilleriverside.com	18	72



Trails

Janesville Trails

Explore more than 30 miles of peaceful trails that run throughout Janesville. Whether you're hiking, biking or taking a leisurely stroll you'll discover a natural environment that recharges your spirit. *Urban nature bonus: our trails connect many of our neighborhoods, including the downtown, to parks and attractions.*

Ice Age Trail

Over 12,000 years ago, an immense flow of glacial ice sculpted a landscape of remarkable beauty across Wisconsin. Today, the Ice Age National Scenic Trail follows the edge of the last glacier, with some of Janesville's trails making up the southern-most segment.

One of our most popular hiking trails is the unpaved and aptly named **Devil's Staircase** segment, located in Riverside Park. The trail climbs up a steep stone staircase and travels on the side of a scenic bluff, along a natural shelf overlooking the beautiful Rock River.

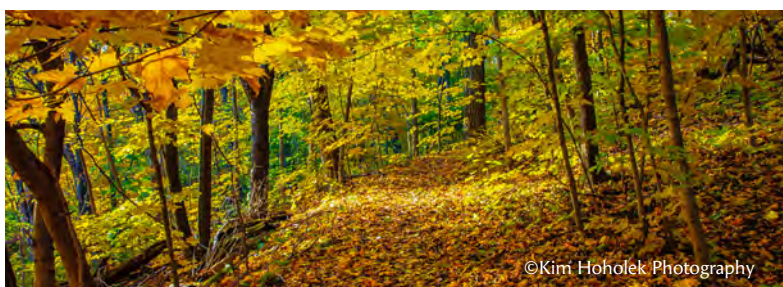
Explore the Janesville to Milton segment of this scenic and lovely trail. Follow the trail over a converted railway bed under a canopy of trees while taking in the great views on this segment. Much of the trail is paved making it ideal for hiking and biking. The Ice Age Trail also incorporates two paved recreational trails along a stream that was once a large glacier melt-water river. *Insider tip: no need to bring your own bicycle. Rentals are available from Velocity Multi-Sport & Cycle.*



©Chase Coleman

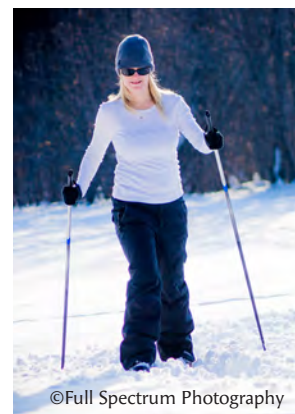
Year-Round Adventure

Janesville's trails offer opportunities for fun during all four seasons. In the winter, the trails, parks and greenbelt system are the ideal place to get out in the open air and enjoy cross-country skiing and snowshoeing.



©Kim Hoholek Photography

Trail Map



©Full Spectrum Photography



Rock Aqua Jays Water Ski Show ©Kim Hoholek Photography

Things to See & Do

Nature

Rotary Botanical Gardens

1455 Palmer Dr • (608) 752-3885
rotarybotanicalgardens.org

Discover the beauty of the award-winning Rotary Botanical Gardens, featuring 20 awe-inspiring acres and a family-friendly atmosphere. Awaken your senses as you take in the dramatic and internationally-themed gardens, including Japanese, Scottish, French Formal, Italian and English Cottage gardens. The Gardens include over 20 different garden styles and 4,000 varieties of plants. Visitors to the Gardens may also enjoy guided garden tours, shopping local artisans' work in the Cottage Garden Gallery Gift Shop, and a variety of educational classes and programs available for adults, youth and families.

Robert O Cook Memorial Arboretum

3550 W Co Hwy A

Hike, cross-country ski or snowshoe the trails that wind their way through 160 scenic acres of native forest and wetland. You can find many species of native trees, plants, birds and other wildlife here. Approximately eight miles of trails wind throughout the Arboretum, some with interpretive trail markers, and the Ice Age National Scenic Trail runs through it. In addition to the natural trails, a paved trail connects the parking, log cabin, and Janesville Schools Outdoor Lab (JSOL) buildings, and a StoryWalk® is posted year round, changing seasonally.

Entertainment

Janesville Performing Arts Center

408 S Main St
(608) 758-0297 • janesvillepac.org

Well known for its acoustics, the theatre is a comfortable space to sit back, relax and enjoy plays, musical theatre, dance, comedy, and musical performances by local, regional and national acts. The center is also home to The Gallery, a small 100-seat performance space and visual arts gallery. The Janesville Performing Arts Center serves as the primary arts and cultural center for the greater Janesville area by providing a home venue for local arts groups. The theatre is housed in the old Janesville High School, which opened in 1923 and was renovated in 2004.

Rock Aqua Jays Water Ski Show

Rock Aqua Jays Stadium - Traxler Park
600 N Main St • rockaquajays.com

Be ready for edge-of-your-seat family-friendly action as you're entertained by some of the world's greatest skiers! With the beautiful Rock River as their backdrop, these talented national-champion performers display their pyramid, ballet, jumping and barefoot water skiing skills. The show features performers of all ages and skill levels. Admission is free, but donations are encouraged. Souvenir t-shirts and concessions are available during the show.

Showtimes: Wednesday and Sunday evenings, Memorial Day weekend though Labor Day.

Janesville Jets Hockey

Janesville Ice Arena
821 Beloit Ave • (608) 752-5387
janesvillejets.com

The Janesville Jets are taking fun family entertainment to an all new high with exciting action-packed home games! Games also include fun promotions and themes, giveaways, contests, and more. The Janesville Jets Hockey Team is a Junior A Team that plays in the North American Hockey League. The playing season runs from September through April. Home games are at the Janesville Ice Arena. Concessions are available.

Comedy Cabin

120 N Crosby Ave
(608) 554-3773 • cabinlaughs.com

Comedy Cabin hosts live comedy shows with cabaret style seating and a full bar. Advance ticket purchase is recommended either by calling or through their website. They host new comedians each week, with performances Thursday, Friday, and Saturday.

Retro City Rockade

1944 S Center Ave • (608) 554-3773

Time for an 80s flashback! Retro City Rockade offers a storefront with classic Atari, Nintendo and Sega games. The real magic is behind the doors - a video game arcade full of more than fifty games ranging from Pac-Man to Donkey Kong, as well as pinball machines. Once inside (a cover charge gets you in all day) all games are set to free play. Pizza and soda are available for purchase.

Rock County 4-H Fair

1301 Craig Ave
(608) 755-1470 • rockcounty4hfair.com

Tradition abounds at the oldest 4-H fair in the U.S., from the numerous animals that compete every year, to the carnival and every unique exhibit in between. The fair is constantly evolving, showcasing amazing entertainment including top country acts and a variety of activities for the whole family.

Live Music

Regardless of your musical tastes, you can find a diverse selection of opportunities to enjoy live music in Janesville throughout the year, including family-friendly outdoor concerts held in one of our beautiful parks or exciting top name performers on the stage at our Performing Arts Center, and local and regional musicians at various venues throughout the city.



History & Tours

Rock County Historical Society

426 N Jackson St
(608) 756-4509 • rchs.us

The Rock County Historical Society (RCHS) is a resource for one-of-a-kind historic tours and exhibits, thought-provoking programming, and unique events. At its center is the Lincoln-Tallman Museum, an Italianate mansion constructed in 1857 and occupied by William Morrison Tallman, a lawyer and abolitionist. Abraham Lincoln visited in October of 1859 prior to his election in 1860. The Tallman family donated the mansion to the city of

Janesville in 1950, with the agreement that it serve as a museum for the community. Visitors are welcome to tour the home.

The RCHS Museum & Visitor Center focuses on exhibits, featuring a display of Parker pens, a beautiful collection of Pauline Pottery and Pickard China, and rotating exhibits that celebrate the history of Rock County legacies. Explore the gift shop, or inquire about hosting a private event. The campus and its historic venues offer ideal opportunities for one-of-a-kind parties, weddings, and business meetings. The Rock County Historical Society also hosts a series of interactive, educational and entertaining events throughout the year.

The 3.5-acre campus is also home to the Tallman Carriage House, 1842 Wilson King Stonehouse, Frances Willard Schoolhouse, and the Archives and Preservation Facility. Check their website for Vintage Car Show, Tallman Arts Festival, and Holiday Tree Show dates and information.

Milton House Museum

18 S Janesville St – Milton, WI
(608) 868-7772 • miltonhouse.org

The hexagonal-shaped Milton House was opened in 1844 as a stagecoach inn by Joseph Goodrich, and is one of the oldest standing poured grout buildings. It was a stop on the Underground Railroad, with a tunnel connecting the Milton House to a log cabin. Now a National Historic Landmark, the Milton House has two Wisconsin Historical Markers on the property - one for the Milton House itself and one for Storrs Lake, where Brigadier General Henry Atkinson and 4,500 soldiers camped overnight in their pursuit of Black Hawk in 1832.

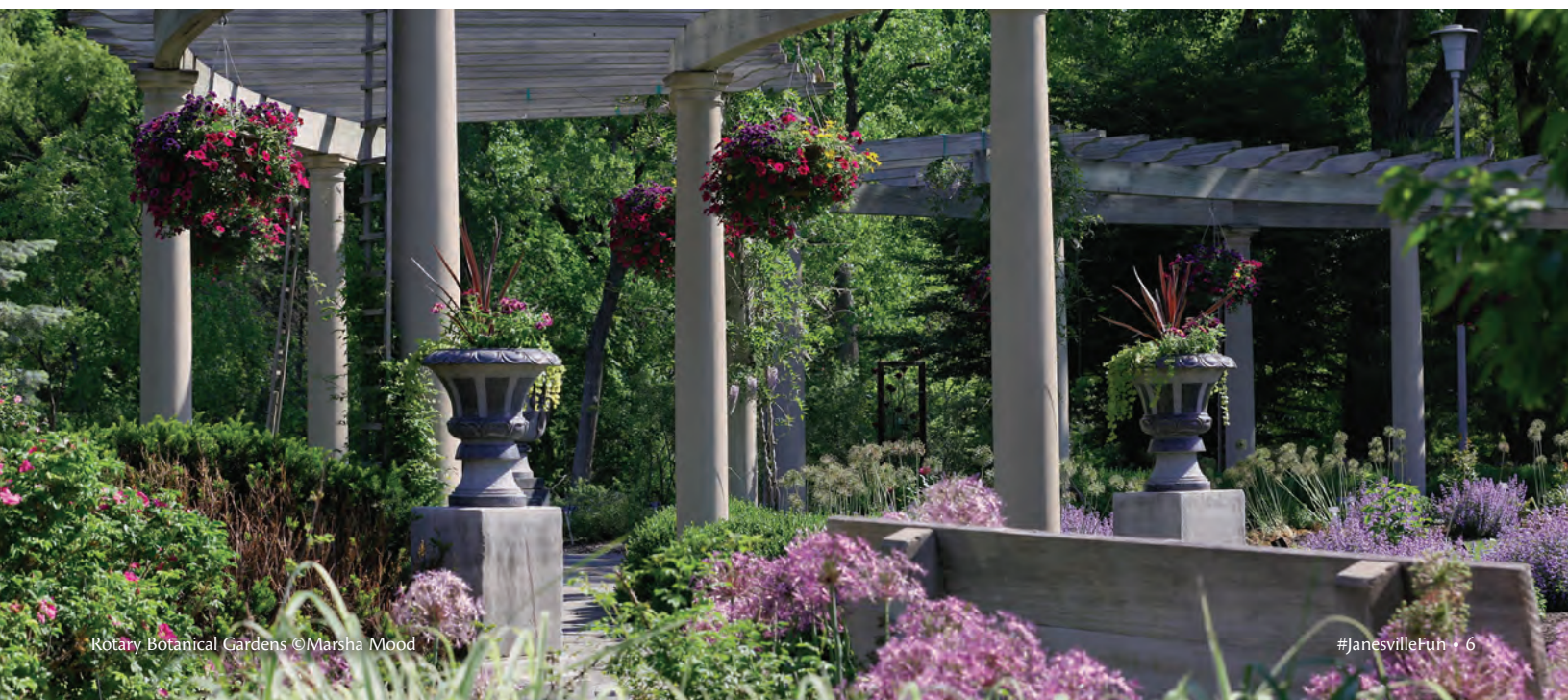
Sterling North Museum

409 W Rollin St - Edgerton - WI
(608) 884-8337 • sterlingnorthsociety.com

Visit the childhood home of Sterling North, an Edgerton native who lived from 1906 to 1974. North wrote such classics as *So Dear to My Heart*, *The Wolfing*, and beloved children's book *Rascal*, an autobiographical story about raising a raccoon in the Edgerton area in the early 1900s. Both *Rascal* and *So Dear to My Heart* were adapted to films by Walt Disney. His childhood home and barn have been turned into a museum and literary center. Self-guided individual tours and guided school and group tours are available May - October or by appointment. There is also a gift shop that features books, clothing and collectibles.

Historic Downtown Walking Tours

For a lesson in history and architecture, all you need to do is walk down our city streets. Janesville is home to 13 historic districts, many of which are ideal for walking tours. Roaming Rich of Roam Around Tours offers guided walking tours designed to showcase the unique personality and stories from Janesville's distinct neighborhoods and downtown. Enjoy a 60-minute guided tour where you will learn about the people, places and heritage of each neighborhood. Visitors who would like to explore on their own can download the Clio app, which has more than 80 historical sites within five miles of downtown. The app is available for Android or iOS. Booklets describing the historic districts are available at the Rock County Historical Society.



Lavinia Goodall Walking Tour

Downtown Janesville
laviniagoodell.com

Lavinia Goodell, Wisconsin's first woman lawyer, lived and practiced law in Janesville. Although many of the buildings no longer exist, you can walk in her footsteps as you explore downtown Janesville and imagine how it looked in the 1870s. The existing courthouse features a Janesville Women's History mural that includes an image of Lavinia Goodell. Download a PDF from janesvillecvb.com of a walking tour that highlights the locations that were part of Lavinia Goodell's life. Photos are included in the PDF that show how it was at that time. A virtual tour is also available on the Lavinia Goodell website, as well as more about her life and career.

North Side Brewery Excavation

Ice Age Trail at Mineral Point & Franklin St

Just a few years ago this site along the Rock River was nearly lost to trees and vegetation, but through the efforts of area volunteers the foundation of the former North Side Brewery, dating back to 1857, is now transformed so visitors can make their way through the engine rooms, and the lower portion of the Brew House. The impressive 30'x60' concrete-floored Fermenting Cellar was installed by Louis F. Knipp around 1892. Work continues and the entire brewery foundation will eventually be exposed. The site is easily accessible from the paved Ice Age Trail adjacent to the North Franklin Parking Lot.

Daluge Farm Tours

3719 S Co Hwy G
(608) 921-4037 • dalugefarminc.org

Experience a modern dairy farm up close! Capture the everyday farm chores using all 5 senses. See cows of all sizes, get your hands dirty examining different ingredients in the cows feed, take in the farm fresh air as you enjoy a tasty dairy treat, and hear the tractors roar and the cows snore. Daluge Farm Inc. is a 5th generation dairy farm on the southern edge of Janesville, milking 140 cows on 170 acres. School field trips or private tours by appointment only. While visiting the farm be sure to check out the Frayed Edges Boutique to shop the hand-selected clothing and accessories.

Wineries & Breweries

Fermenting Cellars Winery

2004 W Manogue Rd
(608) 295-8972
fermentingcellarswinery.com

This unique winery is located in a beautiful country log cabin home in the rolling hills of southern Wisconsin. They offer a variety of dry and sweet, red and white, and a dessert coffee wine, plus Wisconsin craft beers. Please call ahead for groups larger than 4. Fermenting Cellars also hosts regular live music events throughout the summer.

Northleaf Winery

232 S Janesville St – Milton, WI
(608) 580-0575 • northleafwinery.com

This urban family winery is housed in an 1850 building with a long agricultural history. All wines are made on site from grapes grown mostly in California, but also from such diverse places as Chile, New York State and Wisconsin. The tasting room is warm and genuine - and on the National Registry of Historic Places. Try a flight, pair some chocolate or cheese, enjoy live music, and shop the boutique. Call ahead to make arrangements to tour the winery.

Timber Hill Winery

8220 N John Paul Rd – Milton, WI
(608) 247-4615 • timberhillwinery.com

This boutique winery uses cold climate varietals that can grow here in Wisconsin's harsh winters, and produces wine in smaller quantities to achieve the best quality. Visit the Timber Hill Winery tasting room to sample more than 40 wines from sweet to dry, and even spicy. Indulge in delicious Wisconsin cheese boards, dips, pizzas and desserts to pair with your wine. Try their award-winning Muscat, the extra spicy Jalapeno wine, the Social Sweet Series and more. You can also schedule a winery tour, which includes a wine tasting and souvenir wine glass. Enjoy their patio in the summer, and when the weather turns chilly, you can even rent a heated dome for your group of up to 8 people.





Fermenting Cellars Winery ©Travel Wisconsin

Rock County Brewing Company

10 N Parker Dr • (608) 531-8120
rockcountybrewingco.com

Located in downtown Janesville's historic Carriage Works building, Rock County Brewing Company is a nano brewery offering hand-crafted beers made in small batches. Stop in for a taste of their latest brew, try a flight, fill a growler, or pick up a crowler. Food trucks are often on site and are announced on their Facebook page.

Good Works Brewing Company

237 Parkview Dr - Milton, WI
(608) 352-1081 • gwbc.beer

Good Works Brewing Co. is Milton's newest microbrewery and taproom with a beer menu that's always changing. Check them out for a pint, games, and good times.

Green Door Mocktail Bar

34 S Main St (inside 608 Vintage)
greendoormocktail.com

This speakeasy-inspired mocktail bar in the heart of downtown showcases Art Deco decor and an impressive menu of handcrafted mocktails served in vintage glassware. Come for the mocktails, or just take a moment to relax while shopping at its parent store, 608 Vintage.

Markets

Janesville Farmers Market

Town Square - 21 Dodge St
(608) 289-9292
janesvillefarmersmarket.com

Held downtown in the riverfront Town Square, this completely local outdoor market features fresh produce, meat, cheese, baked goods, honey, soaps, flowers, food vendors, and work by local artists. Most Saturdays also offer live music. The event runs on Saturdays, May through October, 8 AM to 1 PM. Indoor markets are also held monthly throughout the winter.

Bodacious Olive

119-123 N Main St • (608) 563-5566
bodaciousshopsjanesville.com

Enjoy shopping this taster's paradise, captivating your palate with the world's finest gourmet and flavor-infused ultra premium olive oils and aged balsamic vinegars. Adding to the culinary adventure are cheeses, gourmet salts and seasonings and the latest kitchen gadgets.

Basics Cooperative

1711 Lodge Dr • (608) 754-3925
basicshealth.com

Shop high quality natural and organic foods, supplements, lifestyle aids and locally grown produce. Basics has an extensive selection of bulk and gluten free food, as

well as an intriguing array of gifts, including Wisconsin Cheese boxes, fruit baskets, local wines and spirits, and custom made crafts. They even have dine-in options, with a coffee shop & deli and Shizen Natural Sushi located inside the store.

Skelly's Farm Market

2713 S Hayner Rd
(608) 757-1200 • skellysfarmmarket.com

Discover Skelly's, where you'll find top quality produce and fun for the whole family! Skelly's Farm Market features delicious seasonal produce from strawberries to sweet corn to pumpkins. Shop the variety of unique items in their gift shop or indulge in a freshly made donut or other baked goods. Head outside to explore family activities including wagon rides, a unique interactive playground, and seasonal sunflower fields and corn mazes. Open June through October.

Lark Market

56 S Main St • (608) 563-1850
larkmarket.store

Shop farm-to-table food from the nearby Lark restaurant kitchen to enjoy at home or on-the-go. Choices include sandwiches, take-and-bake entrees, pies, sauces, dips, and preserves. They also stock an assortment of artisanal cheese, charcuterie, crackers, fine chocolate, seasoning blends, Jeni's ice cream, wine, spirits and more.



In History We Trust
Artist: Jeff Henriquez
Photo: Full Spectrum Photography

Art for all

Public Art Trail Map



Public Art Trail

Be inspired by Janesville's public art including 30+ large scale murals created by local, national and international artists, as well as many sculptures and memorials. Follow our public art trail to view more than 60 pieces of art in Janesville area. Scan the QR code for a Google map of Public Art Trail locations.

Art Exhibits & Classes

The **Janesville Art League's** art collection is housed in the gallery on the second floor of the Woman's Club building. It is free to view during regular business hours or by appointment, as is the rotating display of members' artwork featured at Janesville Performing Arts Center. The **Hedberg Public Library** also presents art and items of interest in a juried exhibit that changes monthly.

Raven's Wish Gallery is an eclectic showcase for the creations of more than 70 local and national painters, jewelers, photographers, and wood, glass, textile, and mixed media artists. The gallery showroom is an artful oasis and a delight for the senses. The gallery hosts artist exhibitions, unique events, and classes year-round.

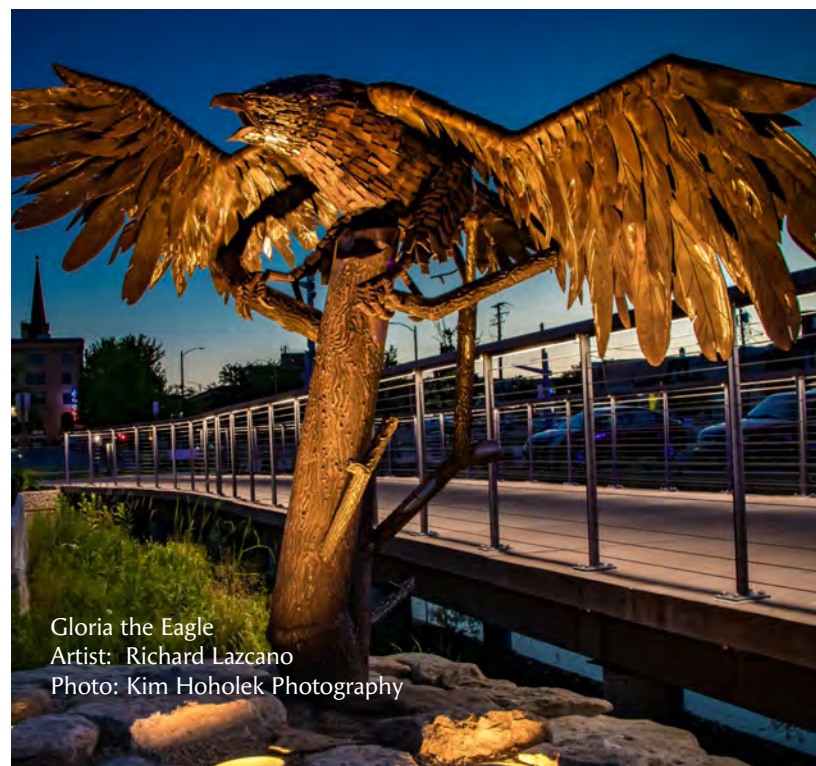
Glass Garden teaches glass art classes and stocks a large selection of products. They can create custom designs and construction in stained glass, etching and carving. They also offer a large array of finished glass art, including stained glass panels, jewelry, and other unique gifts.

Barn Quilts

Rock County, Wisconsin is home to over 200 barn quilts scattered throughout the countryside. These unique pieces of folk art are made from wood and painted to look like a quilt block, then mounted on a barn or other building. Blocks range in size from small 2 foot squares on garages to large 8 foot blocks on barns. Take a relaxing self-guided driving tour to enjoy this charming artwork.

Art Infusion

Held annually in downtown Janesville in September, the Art Infusion event hosts a sidewalk chalk art competition and brings national and international artists to the community. In recent years the event has been responsible for the creation and placement of many of the large-scale murals found downtown.



Gloria the Eagle
Artist: Richard Lazcano
Photo: Kim Hoholek Photography



Artist Spotlight

Jeff Henriquez, Brooklyn, NY

A full time artist known for combining photo realism with elements of graffiti and street art culture, Jeff's murals include nods to the Janesville area's Native American history and its connection to the Underground Railroad.



Emily Balsley, Madison, WI

Emily's stylized approach is colorful and bold, with a touch of quirk. She used drawings created by the students of St. Mary's School for inspiration to create this light-hearted mural.



Richard Lazcano, Janesville, WI

Richard began to take an interest in art in the second grade. In more recent years, he has been employed as a welder. His inspiration for this sculpture came from a funeral urn that depicted an eagle spreading its wings.



Paola Delfin, Mexico City, MX

Since a very early age, Paola found in painting and drawing a magical way to create her own world. Her mural celebrates Janesville's strong ties to farming and agriculture and includes community members connected to farming.



The Farm
 Artist: Paola Delfin
 Photo: Kim Hoholek Photography

12 Fun Things in Janesville for Kids



Rock Aqua Jays ©Kim Hoholek Photography



Rotary Botanical Gardens ©Marsha Mood Photography



Janesville Town Square ©Full Spectrum Photography



Ice Age Trail ©Full Spectrum Photography



CAMDEN Playground ©Full Spectrum Photography



©Daluge Farm

1. Kids of all ages will enjoy exciting performances by the **Rock Aqua Jays Water Ski Show** team that include flips, spins and pyramids on the water. Shows are twice weekly (Sundays & Wednesdays) Memorial Day Weekend through Labor Day. FREE.

Location: Traxler Park,
600 N Main St

2. **The Ice Age Trail** offers miles of paved and unpaved paths ideal for family hikes and bike rides. This scenic trail is a good place to spot wildlife like turkeys, eagles and deer. FREE.

Location: Throughout Janesville

3. Families love **Rotary Botanical Gardens**. Kids can explore the Children's Garden year-round. During the warmer months, the StoryWalk® and associated Garden Art Project are on display, and Story & Stroll provides interactive fun for the little ones.

Location: 1455 Palmer Dr

4. Kids of all abilities can enjoy **CAMDEN Playground**. This accessible playground with a castle theme offers large play areas for both younger and older kids. There are also plenty of picnic areas nearby in the adjacent Palmer Park. FREE.

Location: 2501 Palmer Dr

5. **Town Square and Festival Street** is a fun place for families to visit. Explore The Bubbler, the Gloria the Eagle sculpture, the Blain/Gilbertson Family Heritage Bridge, and the many events that happen in this location. There's also seating and picnic tables nearby ideal for a family picnic. FREE.

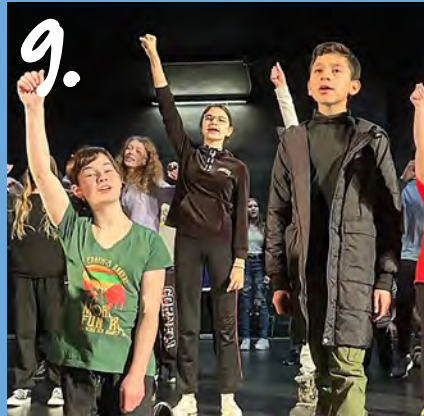
Location: 65 S River St

6. Tour **Daluge Farm**, where you will learn about everyday farm chores and interact with the farm animals on this 5th generation dairy farm. *Tours by appointment.*

Location: 3719 S Co Hwy G



©RiversEdge Bowl



©JPAC Kids



Janesville Jets ©Kim Hoholek Photography



Skelly's Farm Market ©Luke Pritchard Video



©Nature's Touch Garden & Activity Center



©Full Spectrum Photography

7. **RiversEdge Bowl** offers 24 lanes of fun including open bowling, glow bowling, leagues, parties or simply an enjoyable family night out.

Location: 215 S River St

8. Visit **Skelly's Farm Market** in the spring, summer or fall for strawberries, sweet corn, pumpkins, and other produce. Other activities include a free playground, gift shop, bakery, summer sunflowers and fall festival and corn mazes.

Location: 2713 S Hayner Rd

9. At the **Janesville Performing Arts Center** you will find both educational classes for youth and plenty of family friendly performances for all ages and interests. From magicians to musicals, there are plenty of options to stay engaged and entertained.

Location: 408 S Main St

10. **Nature's Touch Garden & Activity Center** offers two HUGE bounce pillows, the largest in Wisconsin, plus terrainable rides, pedal carts and tracks, obstacle courses, giant chess and checkers sets, a sandbox, duck races, corn hole games, and more.

Location: 5013 W State Rd 11

11. Cheer on the **Janesville Jets hockey team** at a home game at the Janesville Ice Arena on select weekends from September through April and meet "Chilly," the Jets' fuzzy mascot.

Location: 821 Beloit Ave

12. Winter is a great time to get outside! Janesville offers several **sledding hills** and plenty of **parks** that are the ideal place to make snow people, toss a few snowballs or build a snow fort. Visit janesvillecvb.com for details. FREE.



Places to Stay

Janesville offers a variety of lodging to make your stay relaxing and memorable. No matter what time of the day or night you arrive, you can rest assured that we'll have comfortable accommodations awaiting you. If you're all about business, we can accommodate that too!

Our lodging options offer premium services and amenities, including guest rooms with ample work space, a full complement of business services, quality fitness facilities and comprehensive meeting

capabilities. Our hotels exceed guest expectations by providing the right room, the right technology and the right service to make every stay relaxing and filled with positive interactions. Several of our hotels are also pet-friendly.

For more information about these accommodations, visit janescv.com or contact the Janesville Area Convention & Visitors Bureau toll-free at (800) 487-2757.

Campgrounds

		# CAMPSITES	WI-FI	CABINS	RENTAL UNITS	RV SITES	SWIMMING POOL	LAKE ACCESS	PET FRIENDLY	STORE	FISHING	PLAYGROUND	GOLF CARTS	MINI GOLF	BASKETBALL, HORSESHOES PICKLEBALL, SHUFFLEBOARD, TENNIS, VOLLEYBALL	SEE AD ON PAGE #
Blackhawk Camping Resort 3407 E Blackhawk Dr, Milton (877) 570-2267 blackhawkcampingresort.com	Hayrides, kayaks, laundry, restaurant	490	●	●		●	●	●	●	●	●	●	●		BHV	
Hickory Hills Campground 856 Hillside Rd, Edgerton (608) 884-6327 campathickoryhills.com	Jumping pillow, boat/canoe rental, themed activities	330		●	●	●	●	●	●	●	●	●	●	●	BHPSV	
Lakeland RV Campground 2803 E State Rd 59, Milton (608) 868-4700 (877) 570-2267 lakelandcampingresort.com	Boat ramp, laundry, nature/ hiking trails, themed activities	682		●		●	●	●	●	●	●	●			BHSTV	
Lakeview Campground & Bar and Grill 1901 E State Rd 59, Milton (608) 868-7800 lakeviewcampgroundandbar.com	All sites are long-term seasonal with sewer, water & electric; bar, restaurant, live music	91				●	●				●	●			H	32
Milton KOA 872 E State Rd 59, Milton (608) 868-4141 (800) 562-3416 koa.com/campgrounds/milton-wi	Baseball, bike rental, game room, hayrides, hiking trails, hot tub, skate park, snack bar, themed activities	264	●	●		●	●		●	●		●	●		BHSV	
Wishing Well RV Resort N551 Wishing Well Ln, Fort Atkinson (920) 568-4100 wishingwellrvresort.com	Game room, jumping pillow, music, pedal cart track, restaurant, theme events, wagon rides	569	●		●	●	●		●		●	●	●	●	BPSV	

Hotels, Motels, Bed & Breakfasts

			# ROOMS / # SUITES	ACCESSIBLE ROOMS	INDOOR POOL	HOT TUB	FITNESS CENTER	BUSINESS CENTER	PET FRIENDLY	BUS/TRUCK PARKING	BREAKFAST (HOT, CNTNTL)	24-HOUR COFFEE SERVICE	RESTAURANT	IN ROOM REFRIGERATOR, MICROWAVE, COFFEE, IRON, (*some rooms)	SEE AD ON PAGE #
AmericInn 3900 Milton Avenue (608) 756-4511 americinn.com	Meeting space for 275, 4 fireplace/ whirlpool suites, 2 mini suites, game room	106 6	2	●	●	●	●	●	●	●	H	●	Nearby and Bar on site	RMCI	
Baymont by Wyndham 616 Midland Rd (608) 758-4545 baymontinns.com	Meeting space for 25, ATM on site	105 8	6	●			●	●	●	●	C	●	Next door	RMCI	
Cobblestone Hotel & Suites 20 W Milwaukee St (608) 757-2200 staycobblestone.com	Downtown, extended stay rates, convenience store, hair dryers	53 29	9	●			●	●	●		H	●	On site and nearby	RMCI Full kitchen*	24
Hampton by Hilton 2400 Fulton St (608) 754-4900 hamptoninn.com	Printing station, hair dryers	98 8	1	●			●		●	●	H	●	Next door	RM*	30
Holiday Inn Express & Janesville Conference Center 3100 Wellington Pl (608) 756-3100 hiejanesville.com	Conference center with meeting space for 750	142 5	14	●	●		●	●	●	●	H	●	Next door	RMI	
Microtel Inn & Suites by Wyndham 3121 Wellington Pl (608) 752-3121 microtelinn.com		61	3					●	●		H	●	Next door	RMI*	27
Motel 6 3907 Milton Ave (608) 756-1742 motel6.com	Free coffee 6 AM – 10 AM	119											Next door	RM*	
Northern Town Motel 1409 Center Ave (608) 754-0248		13											Nearby	RM	
Quality Inn 3520 Milton Ave (608) 754-0251 qualityinn.com		58 1	2				●		●	●	C	●	Nearby	RMCI	27
Super 8 by Wyndham 3430 Milton Ave (608) 756-2040 super8.com	Plugins for buses/trucks	44	3						●		C	●	Nearby	RMCI	27
TownePlace Suites by Marriott 2706 Pontiac Pl (608) 898-4200 townplacesuites.marriott.com	Extended stay rates, Container Store closets, In a Pinch Market convenience store, outdoor grills	87 ALL	5	●			●	●	●	●	H	●	Nearby	RMCI Full kitchen	
Tru by Hilton 2702 Pontiac Pl (608) 302-3838 trubyhilton.com	Open January 2024 Game center	90	7	●			●	●	●	●	H	●	Nearby	RI	
Guardian Angel Bed & Breakfast 429 Prospect Ave (608) 758-3211 guardianangelbnb.com	Private rooms with private baths, furnished apartment for 4-6 guests for short or long-term rentals, daily breakfast special, cable television and video library, downtown, convenient to many local attractions and restaurants, national-registered historic Victorian home with antique furnishings, putting green														
Century Elms Bed & Breakfast 2200 W Memorial Dr (608) 751-3254 centuryelms.com	Four private rooms with ensuite baths, ADA compliant room with private porch, daily breakfast special, national-registered historic Italianate farmhouse with antique furnishings														

Locations

INFORMATION, ACCOMMODATIONS, ATTRACTIONS, MEDICAL AND RECREATION

INFORMATION

- 1** **Janesville Area Convention & Visitors Bureau**
20 S Main St, Suite #11
(608) 757-3171 or (800) 487-2757
- 13** **Seasonal Visitor Information Center**
2501 Palmer Dr, Palmer Park – East Pavilion
(608) 757-3171 or (800) 487-2757
- 47** **Rock County Courthouse**
51 S Main St
(608) 757-5660
- 48** **Hedberg Public Library**
316 S Main St
(608) 758-6600
- 49** **Janesville City Hall**
18 N Jackson St
(608) 755-3000
- 50** **Forward Janesville**
14 S Jackson St, Ste # 200
(608) 757-3160
- 51** **Janesville Transit Transfer Center**
123 S River St
(608) 755-3150
- 52** **Van Galder Bus Terminal**
3120 N Pontiac Dr
(608) 758-0909

ACCOMMODATIONS

- 10** **AmericInn**
3900 Milton Ave
(608) 756-4511
- 2** **Baymont by Wyndham**
616 Midland Rd
(608) 758-4545
- 56** **Cobblestone Hotel & Suites**
20 W Milwaukee St
(608) 757-2200
- 4** **Guardian Angel Bed & Breakfast**
429 Prospect Ave
(608) 758-3211
- 5** **Hampton by Hilton**
2400 Fulton St
(608) 754-4900
- 6** **Holiday Inn Express – Janesville Conference Center**
3100 Wellington Pl
(608) 756-3100
- 7** **Microtel Inn & Suites by Wyndham**
3121 Wellington Pl
(608) 752-3121
- 8** **Motel 6**
3907 Milton Ave
(608) 756-1742
- 9** **Northern Town Motel**
1409 Center Ave
(608) 754-0248
- 3** **Quality Inn**
3520 Milton Ave
(608) 754-0251
- 11** **Super 8 by Wyndham**
3430 Milton Ave
(608) 756-2040
- 57** **TownePlace Suites by Marriott**
2706 Pontiac Place
(608) 898-4200
- 14** **Tru by Hilton**
2702 Pontiac Pl
(608) 302-3838

- 59** **Century Elms Bed & Breakfast**
2200 W Memorial Dr
(608) 751-3254
- 15** **Uptown Janesville (Mall)**
2500 Milton Ave
(608) 752-7845
- 16** **Janesville Performing Arts Center**
408 S Main St
(608) 758-0297
- 17** **Rock County Historical Society
Lincoln-Tallman Museum
Helen Jeffris Wood Museum Center**
426 - 450 N Jackson St
(608) 756-4509

- 18** **MacFarlane Pheasants, Inc.**
2821 S US Hwy 51
(608) 757-7881
- 20** **Pine Tree Plaza**
2900 Deerfield Dr
- 21** **Rock Aqua Jays Water Ski Show**
Memorial Day - Labor Day
600 N Main St, Traxler Park
rockaquajays.com
- 22** **Rock County Fairgrounds**
1301 Craig Ave
(608) 755-1470
- 23** **Rotary Botanical Gardens**
1455 Palmer Dr
(608) 752-3885
- 46** **Skelly's Farm Market**
2713 Hayner Rd
(608) 757-1200
- 24** **10 South**
10 South High St
(608) 590-0030
- 25** **Wisconsin Wagon Company**
507 Laurel Ave
(608) 754-0026
- 54** **The Venue**
37 S Water St
(608) 373-9727
- 55** **Festival Street - Town Square**
S River Street
- 58** **Glen Erin Golf Club/Celtic House**
1417 W Airport Rd
(608) 750-1508

SCHOOLS

- 26** **Blackhawk Technical College**
6004 S County Road G
(608) 758-6900
- 27** **Craig High School**
401 S Randall Ave
(608) 743-5200
- 28** **Edison Middle School**
1649 S Chatham St
(608) 743-5900
- 29** **Franklin Middle School**
450 N Crosby Ave
(608) 743-6000
- 30** **Marshall Middle School**
25 S Pontiac Dr
(608) 743-6200
- 31** **Parker High School**
3125 Mineral Point Ave
(608) 743-5600

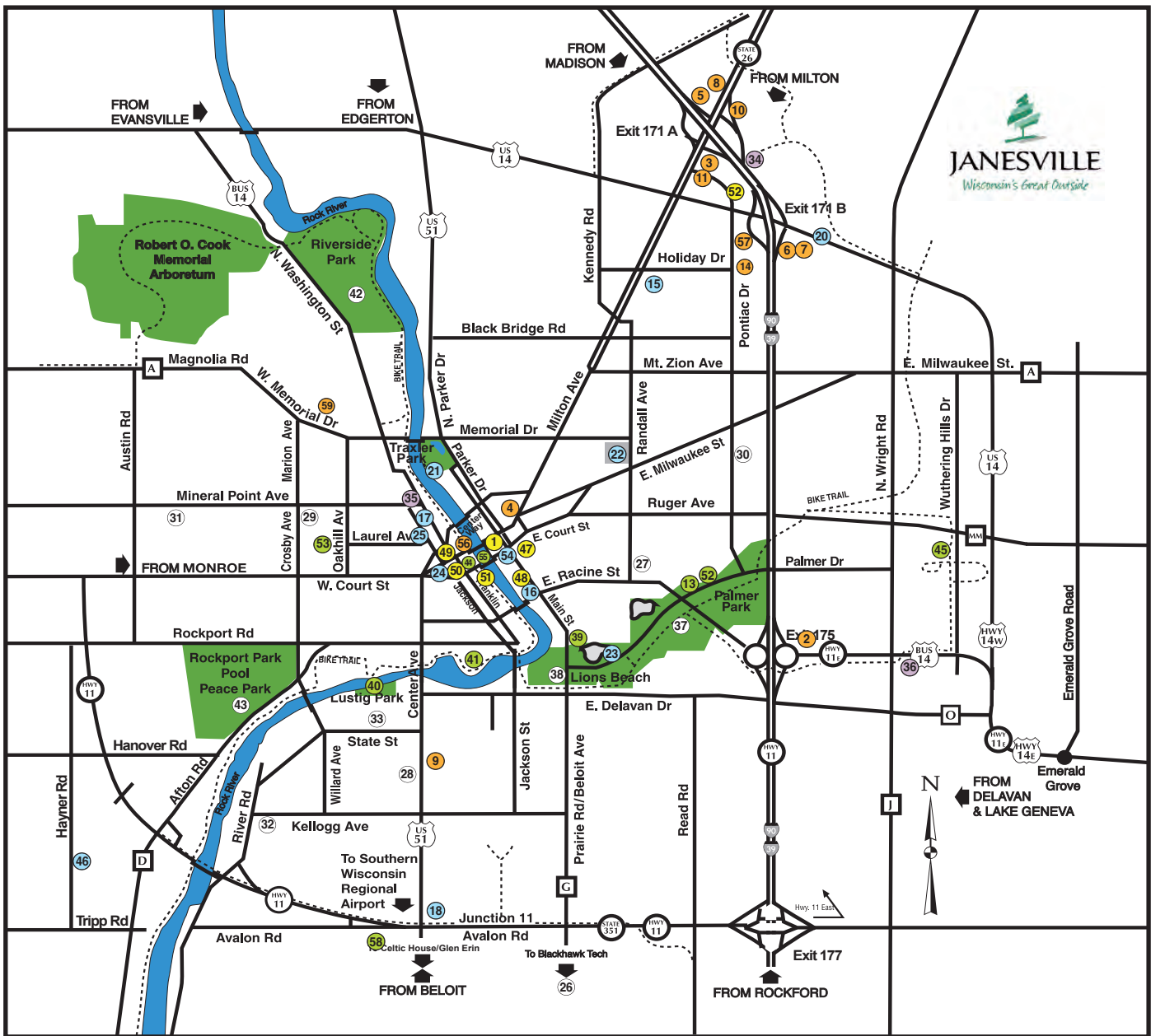
- 32** **University of Wisconsin-Whitewater at Rock County**
2909 Kellogg Ave
(608) 758-6565
- 33** **WI Center for the Blind & Visually Impaired**
1700 W State St
(608) 758-6100

MEDICAL

- 34** **Mercyhealth Hospital & Trauma Center Emergency North**
3400 Deerfield Dr
(608) 314-3600
- 35** **Mercyhealth Hospital & Trauma Center**
1000 Mineral Point Ave
(608) 756-6000
- 36** **SSM Health St. Mary's Hospital Janesville**
3400 E Racine St
(608) 373-8000

RECREATION FACILITIES

- 37** **Blackhawk Golf Course**
2100 Palmer Dr
(608) 757-3090
- 53** **Bond Park Skate Park**
201 N Oakhill Ave
(608) 755-3030
- 38** **Dawson Softball Complex**
920 Beloit Ave
(608) 755-3030
- 58** **Glen Erin Golf Club**
417 W Airport Rd
(608) 750-1508
- 39** **Janesville Ice Arena**
Home of Janesville Jets Hockey
821 Beloit Ave
(608) 755-3015
- 40** **Lustig Park – Disc Golf Course**
1500 River View Dr
(608) 755-3030
- 41** **Monterey Park – Stadium**
465 Rockport Rd
(608) 743-5008
- 51** **Outdoor Fitness Court**
111 S River St
(608) 755-3030
- 13** **Palmer Park - CAMDEN Playground**
2501 Palmer Dr
(608) 755-3030
- 42** **Riverside Golf Course**
2100 Golf Course Rd
(608) 757-3080
- Riverside Park - Disc Golf Course**
2600 Parkside Dr
(608) 755-3030
- 43** **Rockport Park/Pool/Peace Park**
2801 Rockport Rd
(608) 755-3025
- 52** **Stretch Out the Stress Fitness Stations**
520 Mohawk Rd
- 44** **YMCA / Boys & Girls Club**
221 Dodge St
(608) 754-9622 / (608) 755-0575
- 45** **Youth Sports Complex**
100 S Wuthering Hills Drive
(608) 755-3030



Transportation

PLANES, BUSES AND AUTOMOBILES

CAR RENTAL:

Enterprise Rent-A-Car
(608) 758-7100

Budget Car Rental
(608) 756-4990

BUS/CHARTER:

Van Galder Bus Company
(800) 747-0994 • vangalderbus.com

CITY TRANSIT SYSTEM:

JTS (Janesville Transit System)
(608) 755-3150 • **Transit Transfer Center**
123 S River St
ci.janesville.wi.us/jts

TAXI CABS:

LME Transportation LLC
(608) 359-2016

AREA AIRPORTS:

Southern Wisconsin Regional Airport
Private Charter/Freight Cargo
1716 W Airport Rd
(608) 757-5768 • jvlairport.com

Dane County Regional Airport
Madison, 40 miles north
(608) 246-3380 • msnairport.com

Chicago, Rockford International Airport
Rockford, 30 miles south
(815) 969-4000 • flyrfd.com

General Mitchell International Airport
Milwaukee, 75 miles east
(414) 747-5300 • mitchellairport.com

Chicago O'Hare International Airport
Chicago, IL, 90 miles southeast
(800) 832-6352 • flychicago.com

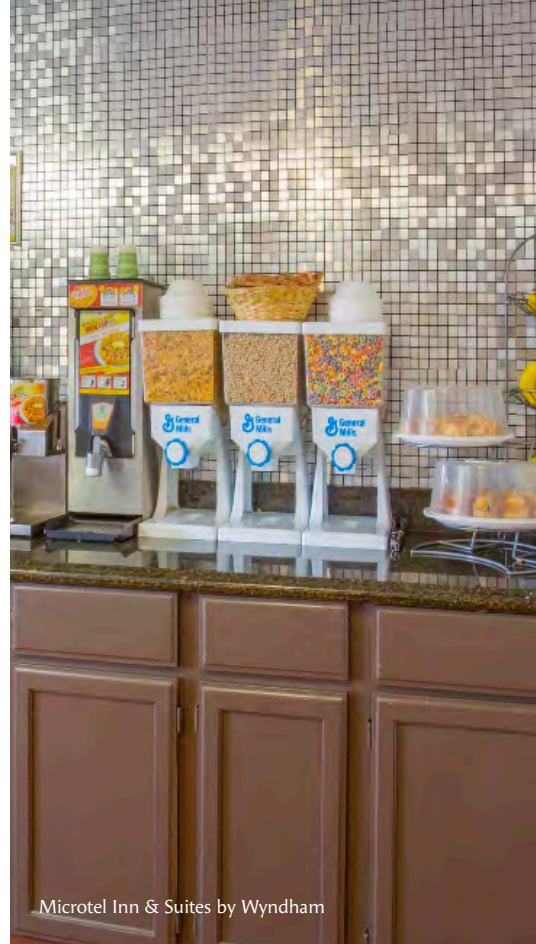
Chicago Midway International Airport
Chicago, IL, 120 miles southeast
(773) 838-0600 • flychicago.com



Cobblestone Hotel & Suites
©Full Spectrum Photography



Quality Inn



Microtel Inn & Suites by Wyndham

Comfort & Value



Super 8 by Wyndham



TownePlace Suites by Marriott



Hampton by Hilton



Rotary Botanical Gardens
JANESVILLE, WISCONSIN

Photos: Marsha Mood

Rotary Botanical Gardens is an award winning 20-acre, non-profit botanic showcase with over 26 different garden styles and 4,000 varieties of plants. Featuring garden weddings, meeting and event space, tours, workshops and more!

1455 Palmer Dr, Janesville, WI • (608) 752-3885 • rotarybotanicalgardens.org



CITY OF JANESVILLE
Wisconsin's Park Place

Proud To Serve You!

WELCOME TO
JANESVILLE
Wisconsin's Park Place

[f](#) [t](#) [n](#) [ixle](#) [i](#) [n](#) 

WWW.JANESVILLEWI.GOV



Cozy Inn ©Travel WI

Downtown Janesville

Let's eat & shop!

Enjoy scenic views of the river and downtown as you sip an espresso, fine wine, cocktail or classic soda from the patios of **Genisa Wine Bar**, **Bodacious Shops of Block 42**, **drafhhouse**, or **Wissota Chophouse**. Indulge in deep fried real Wisconsin cheese curds and a hearty burger at a local pub like **Looking Glass**, **O'Riley & Conway's Irish Pub**, **Riley's Sports Bar & Grill** or **Whiskey Ranch**.

When you're looking for a unique yet casual dining experience **Sandwich Bar** is a great place to find it, with gourmet sandwiches, a funky interior designed by muralist Jeff Henriquez, and a fun, dive bar vibe that feels like stepping into a graphic novel.

For seasonally inspired dishes and craft cocktails **Lark** is the place to go. Visit **Cozy Inn**, Wisconsin's oldest Chinese restaurant and the second oldest in the United States, where you'll find great food, service and a throwback vibe. All in all, Janesville's downtown includes more than two dozen eateries that offer a wide variety of dining options.

Now it's time to shop... You may go home with a work of art, a piece of vintage jewelry, a specialty olive oil, or delicious cheesecake when you visit Janesville's unique shops such as **Classy Rascals**, **Adorn**, **Mood**, **Velvet & Tulle** and **Carousel Consignments**.

**Clothing for Kids
& Babies**
Baby Essentials & Gear
Nursery Items
Specialty Items for Mom
Gifts & Toys



113 E. Milwaukee St.
 (608) 751-2222
classyrascalsboutique.com





stationery, gifts & home decor



19 N Main St Janesville, WI

608-607-0032 www.moodjanesville.com

Scan the code to download our downtown map that includes all of the downtown options for dining, shopping and more.



A fashion savvy women's clothing boutique in Historic Downtown Janesville!

217 W. Milwaukee St. • Janesville, WI 53348 • (608) 208-2055

www.velvetandtulle.com



Early Bird Breakfast Specials Daily • 6am - 9am **\$8.49**

Lunch Combo Deals Daily starting at **\$10.49**

Famous for Fresh Squeezed OJ & Signature Pancakes!

208 S. Main Street (next to Hedberg Public Library) Janesville
Open Daily 6am - 3pm • 608-754-9006 • www.citruscafe208.com



DISCOVER JANESVILLE'S FOODIE BLOCK



54-60 S. Main St.

Lark

Finer dining, craft cocktails
larkjanesville.com

Lark Market

Gourmet groceries, wine, spirits
larkmarket.store

Sandwich Bar

Damn fine sandwiches, okay beer
sandwichbarjanesville.com



MEETINGS, CONFERENCES, SPORTS EVENTS, WEDDINGS



10 South Wedding Venue

Get Together

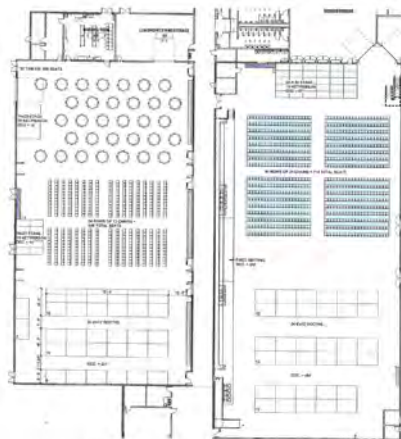
Are you planning a business meeting, conference, sports event, wedding, or other large gathering? Look no further than Janesville, Wisconsin's Meeting Place. Janesville offers many event venues both large and small, indoor and outdoor, formal and fun.

Great Location

Janesville is conveniently located directly off of I39/90 and less than one hour from Milwaukee, Madison and Rockford, IL, and less than 2 hours from Chicago, IL. There is hourly bus service to and from Chicago O'Hare Airport.

Venue Options

Janesville features a variety of venue options including unconventional, one-of-a-kind locations that are sure to make your meeting or special event distinctive and unforgettable.



Rock County Historical Society ©Full Spectrum Photography

Lodging

There are also a dozen hotel options for your attendees. They feature a range of amenities sure to keep your guests comfortable.



Janesville Conference Center at Holiday Inn Express
©Full Spectrum Photography

Opening in 2025 - Book your meeting/event at the new **Woodman's Sports & Convention Center**. With 130,000 square feet, the Woodman's Center will be the ideal place for meetings, conferences, trade shows and sports events. In addition to a year-round permanent ice arena that will house hockey, figure skating, and other on-ice sports, the Center will include a 20,000 square-foot conference or sports court space, and a multi-use arena that will be ice for a portion of the year and converted to dry space for additional conference space or sports courts.

Call (800) 487-2757 for more information or visit janesvillecvb.com/meetings

JANESVILLE AREA
Convention & Visitors Bureau

CAROUSEL CONSIGNMENTS

Antiques • Collectibles • Housewares

Monday- Friday 9:00am to 5:30pm

Saturday 9:00am to 5:00pm

VOTED #1 ANTIQUE STORE

31 S. Main St. • Janesville, WI

608-758-0553



ethical. eco-friendly. woman-made.



ADORN
JANESVILLE

39 S Main St, Janesville • adornjanesville.com

808 Cheesecake

119 W. Milwaukee Street
Downtown Janesville
608.530.2773

Island Inspired & Traditional Award Winning Gourmet Cheesecakes
Bite Size – Personal Size – Large 9"
Macarons • Cream Puffs • Tiramisu



\$5 Off \$30 Purchase

One coupon per customer. Not valid with other offers.

808 Cheesecake or 808 Poke Hawaiian Style



NOW OPEN!

Behind 808 Cheesecake
608.704.9808

Take Out Only

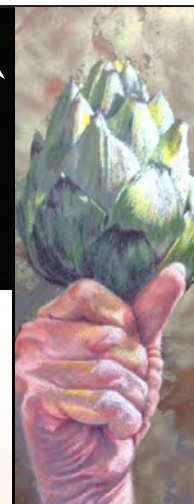


\$10 Off \$60 Purchase

One coupon per customer. Not valid with other offers.

808 Cheesecake or 808 Poke Hawaiian Style

**Raven's
WISH** LLC
Gallery / Studio



Historic Downtown Janesville • 101 W. Milwaukee St.
608.757.2622 • ravenswish@charter.net

www.ravenswish.com

A September Weekend Filled With Art in Downtown Janesville!



**Art
Infusion**
CHALK ART COMPETITION, ARTISTS,
EXHIBITS & INTERACTIVE FUN

janesvillecvb.com or (800) 487-2757

LOCAL CRAFT BEER

IN HISTORIC DOWNTOWN JANESVILLE



10 N. PARKER DRIVE, SUITE 160
JANESVILLE, WI
WWW.ROCKCOUNTYBREWINGCO.COM



TAPROOM HOURS:

WEDNESDAY 4 PM - 9 PM
THURSDAY 4 PM - 9 PM
FRIDAY 4 PM - 10 PM
SATURDAY 11 AM - 10 PM
SUNDAY 12 PM - 6 PM

WHISKEY RANCH

BAR AND GRILL



24 N. Main St., Janesville • 608.563.1554 | Intersection of Hwy 14 & 89, Delavan • 262.882.2800
Open 7 Days at 11 am • www.thewhiskeyranch.com



A relaxed restaurant
with a warm vibe for
spicy curries, noodles &
other Thai favorites,
plus beer & wine



12 S Main St, Janesville, WI 53545 • (608) 563-2147
www.sandeesthaifusion.com •



Velocity Multi-Sport & Cycling
Janesville, WI

YOUR LOCAL STORE FOR ALL THINGS BIKE & RUN/WALK

www.velocitymultisport.com
1327 N. Wright Rd. Ste 180
608-352-0649

Event Management

Timing Services

E-Bike Rentals

Bike Sales/Service

Walk/Run Shoes

Good for 20% OFF

In store purchase

O'Riley & Conway's

Irish pub

54 Beers on Tap and over
100 different beers total! HUGE
House Wines & Scotch List!

Offering a fantastic menu featuring
traditional Irish fare, the freshest
seafood, belt busting burgers and
sandwiches and a great Irish breakfast!



214 W Milwaukee St Janesville, WI 53548 • (608) 752-6099
HOURS: Monday - Sunday 11:00 am - 2:00 am



www.orileyconwaysirishpub.com

NO
EXPERIENCE
NECESSARY!



Super
Unique
Shopping
Experience!

Beginning Stained Glass Classes
1 Day Fusing Classes
Private Parties
Girlfriends' Night Out
Finished Panels, Platters & Jewelry for Sale

25 West Milwaukee Street, Janesville
608-754-3718 • eglassgarden.com

Genisa

Italian Hospitality At Its Finest

SPECIALTY PIZZA CHARCUTERIE WINE BAR ESPRESSO

FRESH INGREDIENTS AND INNOVATIVE OFFERINGS



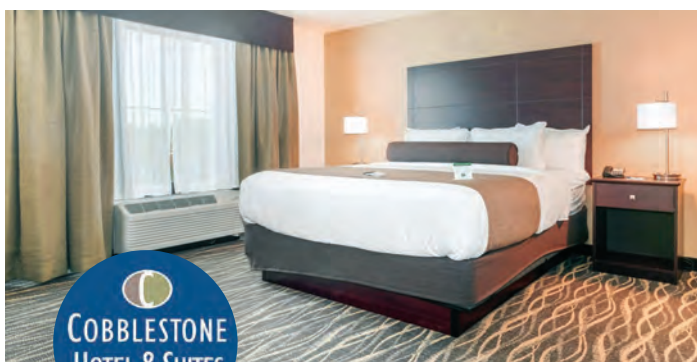
DOWNTOWN JANESVILLE | GENISAWINEBAR.COM



A FULL SERVICE SALON & BOUTIQUE

Clothing • Accessories • Jewelry • Chocolates
Toffee • Lotions • Art • Furniture • Gift Items

Olde Towne Mall, 20 S Main St, Ste 15 (608) 289-4780 ☎



Discover

Wisconsin's Great Outside

Janesville

Let the **Cobblestone Hotel & Suites** be your home away from home after a long day exploring Janesville's **scenic trails, parks and downtown.**

888.693.8262 20 W. Milwaukee St.
Janesville, WI 53548 StayCobblestone.com

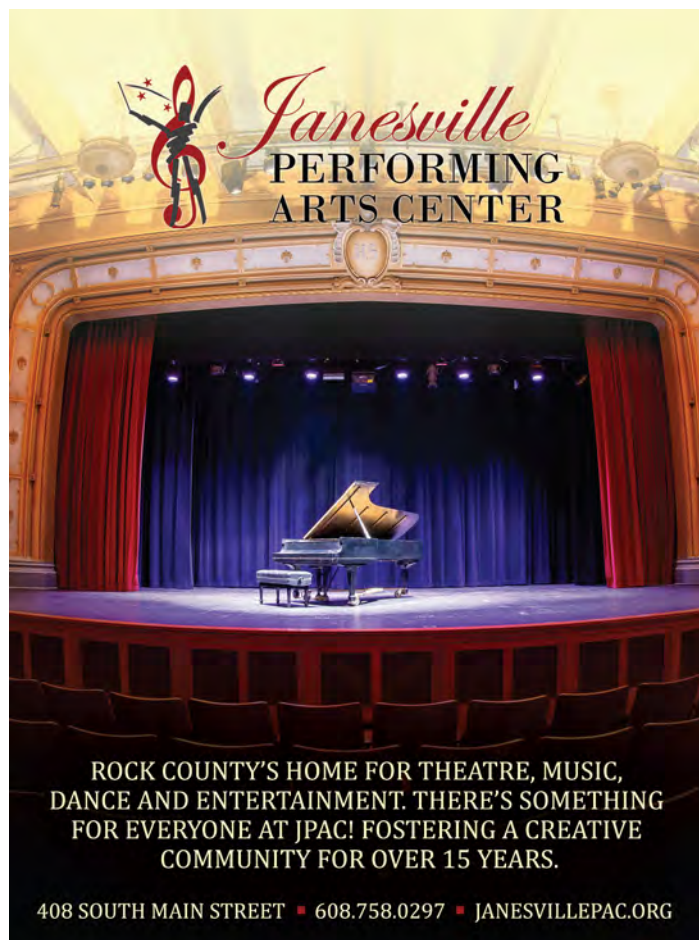
Amenities

Suites Available
Fitness Center
Wi-Fi
Hot Breakfast
Indoor Pool
Pet Friendly
And More!



Angus Steaks & Cold Beer

Located inside of Cobblestone Hotel & Suites
Make a reservation at www.WissotaChophouse.com



ROCK COUNTY'S HOME FOR THEATRE, MUSIC,
DANCE AND ENTERTAINMENT. THERE'S SOMETHING
FOR EVERYONE AT JPAC! FOSTERING A CREATIVE
COMMUNITY FOR OVER 15 YEARS.

408 SOUTH MAIN STREET ■ 608.758.0297 ■ JANESVILLEPAC.ORG



Bodacious
- OF BLOCK 42 -

**Little things done
in a big way.**

Coffee • Breakfast • Lunch
Olive Oil & Vinegar • Live Music
Event Spaces • Riverside Patio

(608) 563-5566
119 N. Main St.
Downtown Janesville

Follow us on social media!
[@bodaciousshopsofblock42](#)



SHOPPING, DINING, MUSIC, ARTS AND MORE!



EXPLORE DOWNTOWN JANESVILLE.

DowntownJanesville.com



A CRAFT BEER DESTINATION

18 REVOLVING TAPS

DELICIOUS FOOD

SANDWICHES, BURGERS,
SALADS

DAILY SPECIALS

SUNDAY BRUNCH

ENTERTAINMENT

LIVE MUSIC

SEATING



INDOOR & PATIO



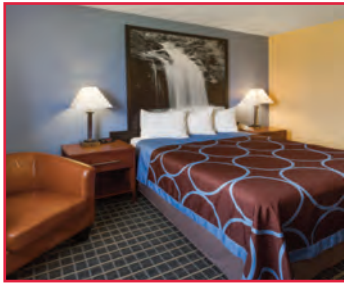
The Looking Glass

18 N Main St, Downtown Janesville, WI

(608) 755-9828

stayglassyjanesville.com  





**Newly
Remodeled!**



Janesville

- Free HOT Deluxe Breakfast
- Free Wi-Fi, Guest Laundry
- In Room Fridge, Microwave & Coffee Maker
- New 32" Flat Panel LCD TV's

- All HD Channels
- Group/Construction Rates Available
- Low Weekly & Monthly Rates Available

3430 Milton Ave, Janesville, WI 53545

Phone: (608) 756-2040

Email: frontdesk3430@gmail.com

www.super8.com

ADJACENT TO MANY RESTAURANTS, BARS & GRILLS



Count on quality, value, and great service at our Microtel Inn & Suites by Wyndham Janesville hotel. Located off I-90 and I-39, we are the perfect place to rest your head while you visit the City of Parks. The Van Galder Bus to Chicago O'Hare Airport is just half a mile from our hotel.

- Free continental breakfast
- Free high speed wireless internet
- Children 17 and under free with parents, Pets allowed/fee
- Guest computer
- Free local/long distance phone calls
- Flat screen TV's

3121 Wellington Place • Janesville, Wisconsin 53546
(608) 752-3121 or (888) 771-7171

microtelinn.com



BY CHOICE HOTELS

Newly Remodeled!

3520 Milton Ave, Janesville, WI 53545
(I-90 Exit 171A)

(608) 754-0251

www.choicehotels.com

- Free HOT Deluxe Breakfast (Scrambled Eggs, Sausage, Belgian Waffle)
- Free Wi-Fi, Guest Laundry
- In Room Fridge, Microwave & Coffee Maker
- New 32" Flat Panel LCD TV's

- All HD Channels including 7 HBOs
- Group/Construction Rates Available
- Low Weekly & Monthly Rates Available

ADJACENT TO MANY RESTAURANTS, BARS & GRILLS

Naturestouchinc.com

Nature's Touch Inc.

5013 HWY 11
JANESVILLE WI
53548
608-757-0000

Natures Touch Garden & Activity Center

Make memories with the whole family at our Activity Center! The Garden Center has everything to make your yard an oasis.



It's Only Natural

BRINGING THE GARDENERS THE
VERY BEST & BRIGHTEST!



608.752.8917
www.kwgreenery.com

1328 Hwy East, Janesville, WI

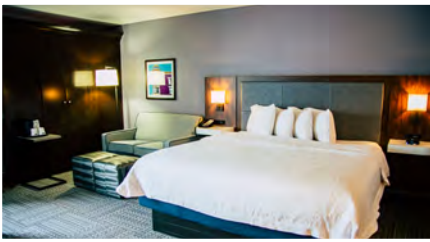


Discover hometown hospitality!

CLOSE TO MANY POPULAR JANESVILLE ATTRACTIONS



Just off I-90, our hotel offers a warm welcome within minutes of central Janesville—a charming city known throughout the state as ‘Wisconsin’s Park Place.’ Situated within an hour of both Madison, WI and Rockford, IL, this hotel makes a great base for southern WI and beyond. Whether you’re in town to meet with Janesville businesses or tour the beautiful Rotary Botanical Gardens, the Hampton Inn Janesville offers the comforts of home.



Included in every stay:

- A warm welcome
- Clean & fresh Hampton Bed®
- Free high-speed internet access in every room
- Gym/fitness center use
- Pool use
- Free hot breakfast

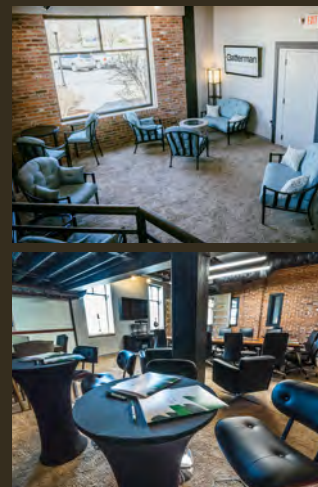
2400 Fulton Street • Janesville, Wisconsin, 53546 • 1-608-754-4900

Janesville.hamptoninn.com

Mention this ad when you check in and be entered in a monthly drawing for discounts or a free room. Must be staying at the hotel and mention the ad upon check in or when booking reservation.

Meeting Space

AVAILABLE FOR RENT BY THE HOUR, HALF OR FULL DAYS



AMENITIES:

- Space for up to 50 attendees
- Two 65" monitors
- Four 55" monitors
- WiFi & cable access
- Refrigerator / Freezer
- Downtown location
- Free parking



(608) 743-9350
email: the1917@rhhbatterman.com
19 N. High St. Janesville

GOING ABOVE & BEYOND FOR HER COMMUNITY

As an accomplished Rock County REALTOR®, and Janesville native, Renae Henry brings years of experience and knowledge of the Janesville community. Through Renae's career, she has developed a reputation for refreshing, friendly, and individualized service.

Call Renae for all your buying, selling, and referral needs.

Renae Henry | REALTOR®
(608) 247-2011
Renae.Henry@c21affiliated.com



WOODMAN'S SPORTS & CONVENTION CENTER



OPENING IN SUMMER 2025 - BOOK NOW

FLEX SPACE

- ✓ 20,000 square feet
- ✓ Meetings, tradeshows, events, athletics

MULTI-PURPOSE ARENA

- ✓ 23,000 square feet
- ✓ Conferences, events, multi-sport use

MAIN ICE ARENA

- ✓ 1,500 seating capacity
- ✓ Year-round ice rink

The ideal place in Janesville to hold sports events, meetings, reunions, special events. Close to lodging, dining, shopping, and attractions.



www.woodmanscenter.com



Meeting Space & T-Hanger Space Rental

Conference rooms ideal for your next meeting or workshop up to 50 people



Call 608-757-5768 or email JVLAirport@co.rock.wi.us for rental information



Amenities Include:

FBO, pilot lounge, restaurants, 18-hole golf course with driving range and large banquet facility



1716 W Airport Rd, Janesville, WI 53546
www.co.rock.wi.us/departments/airport



Bar & Restaurant
Open to the Public

Campground & Bar and Grill
www.lakeviewcampgroundandbar.com



*Located 90 miles north of Chicago, with 850 ft of lake frontage
on beautiful Lake Koshkonong.*

OUTDOOR DINING & BOAT PARKING

FRIDAY FISH FRY/SALAD BAR DAILY

LUNCH SPECIALS

LIVE MUSIC THURS - SUN, MEMORIAL DAY-LABOR DAY

DJ/KARAOKE, SATURDAYS, YEAR-ROUND

NOW SERVING SOFT SERVE ICE CREAM

1901 E State Road 59 • Milton, WI 53563

(608) 868-7800 • 



**FESTIVE EATERY SERVING AUTHENTIC
MEXICAN CUISINE & FLAVORED MARGARITAS AMID
COLORFUL HAND-PAINTED DECOR**

Monday - Thursday 11:00 AM - 9:30 PM

Friday - Saturday 11:00 AM - 10:00 PM

Sunday 11:00 AM - 9:00 PM

608.754.8835

3001 N Lexington Dr. Janesville, WI 53545

www.haciendarealrestaurant.com

NEW MENU



**Wet Bottoms
Bar & BBQ**

Bands, food, fun!



Live music weekly

A full menu, featuring wood smoked BBQ

Cold beer, specialty cocktails

Indoor and outdoor seating



Scan code with
a smartphone

723 E Ellendale Rd., Edgerton, WI • (608) 561-6279 • wetbottoms.com • 

Floating Toy

Boat rentals
& slips

(608) 921-9453



**TOUR WISCONSIN'S ONLY
CERTIFIED UNDERGROUND
RAILROAD STOP OPEN
TO THE PUBLIC**



School and Group tours welcome year-round.
Summer tour season runs June through August

For details call or visit our website

18 S Janesville St. | Milton, WI 53563 | 608.868.7772
www.miltonhouse.org

Come and Join Us...
Celebrate Every Day!



Northleaf
Winery

Wine Flights · Pairings
Live Music · Fun Events

232 South Janesville St Milton WI 53563
608-580-0575 · northleafwinery.com


Join the Action and Get Ready for Take Off!
SEASON: SEPTEMBER - APRIL
FRIDAY & SATURDAY NIGHTS



Kim Hoholek Photography

The Janesville Jets is a community-oriented North American Hockey League team that provides sports fans and families fast-paced and affordable entertainment while helping talented hockey players develop into admirable young men and enter the ranks of college and professional hockey.

JANESVILLE ICE ARENA

 821 Beloit Ave. • Janesville, WI 53545 • 608.752.5387

www.janesvillejets.com

Grilled to Perfection

PRIME QUARTER STEAK HOUSE
"Grill Your Own" Tonight



...mmm....Steak!

1900 Humes Road
Janesville, WI 53545

608-752-1881

primequarter.com 

Saturday

Dinner: 4pm – 10pm
Lounge opens at 3:30pm

Sunday

Dinner: 4pm – 9pm
Lounge opens at 3:30pm

Monday – Closed

Tuesday – Friday

Dinner: 5pm - 10pm
Lounge opens at 4pm



JANESVILLE LOCATIONS

2421 W Court St
(608) 756-2611

2633 Milton Ave
(608) 758-8916

645 Midland Rd
(608) 554-3712



drafthouse

GREAT FOOD! GREAT DRINKS! GREAT TIMES!

Located in the heart of Janesville's downtown, drafthouse, is a fun, high-energy downtown gastropub that celebrates the richness of American culture through its appetizing and progressive bar fare.